



LOGIC
TECHNOLOGIES

PRODUCT SPECIFICATION

DESCRIPTION

TFT Module – 3.0”
240x (RGB) x 400

PART NUMBER

LTTD240400030-L3-TF

VERSION

1.2

ROHS COMPLIANT

Table of Contents

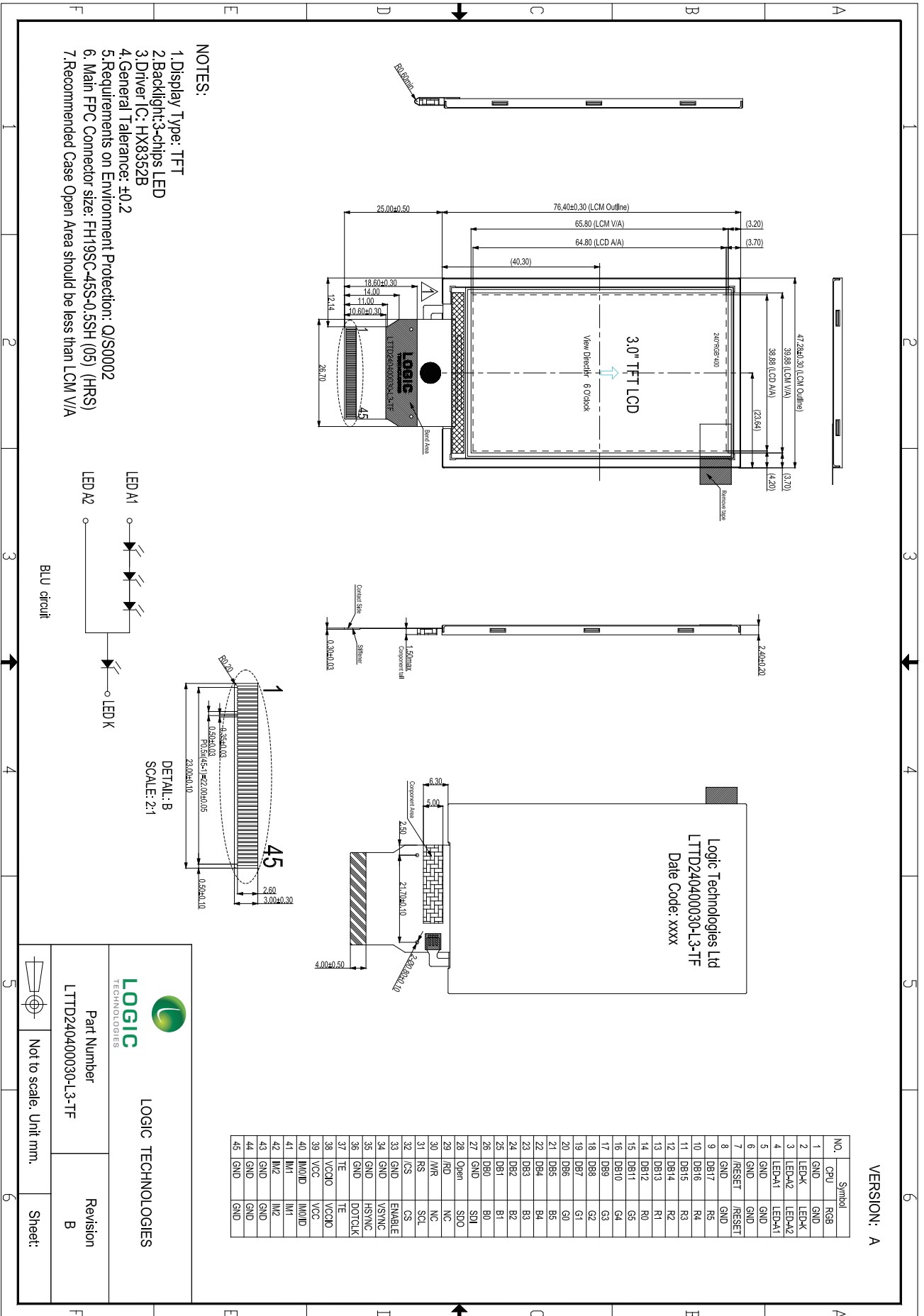
- GENERAL INFORMATION
- MECHANICAL DIMENSIONS
- ABSOLUTE MAXIMUM RATINGS
- ELECTRICAL CHARACTERISTICS
- BACKLIGHT CHARACTERISTICS
- ELECTRO-OPTICAL CHARACTERISTICS
- INTERFACE DESCRIPTION
- TIMING CHART AND DATA
- RELIABILITY TESTING
- INSPECTION CRITERIA
- INSPECTION STANDARD
- PRECAUTIONS FOR USING LCD MODULES
- WARRANTY

- GENERAL INFORMATION

Item	Contents	Unit
LCD Type	TFT Transflective	Note 1
Technology	a-Si TFT	---
Viewing Direction	6:00	O'clock
Viewing Angle (Gray Scale Inversion Direction)	12:00	O'clock
Module dimensions (W x H x T)	47.28x76.4x2.4	mm
Active area (W x H)	38.88x 64.8	mm
Number of pixels	240 RGB x 400	---
Pixel pitch	0.162x0.162	mm
Pixel Configuration	R.G.B. Vertical Stripe	mm
Colours	262K	---
Contrast ratio	100 (typical)	---
Backlight	4 LED (Serial)	---
Backlight Brightness	130 (typical)	cd/m ²
Controller	HX8352B	---
Interface	CPU or SPI+RGB	---
Operating temperature	-20 to +70	°C
Storage temperature	-30 to +80	°C

Note 1: ECB Transflective mode

MECHANICAL DIMENSIONS



- NOTES:
1. Display Type: TFT
 2. Backlight: 3-chips LED
 3. Driver IC: HX8352B
 4. General Tolerance: ±0.2
 5. Requirements on Environment Protection: Q/S0002
 6. Main FPC Connector size: FH19SC-45S-0.5SH (05) (HRS)
 7. Recommended Case Open Area should be less than LCM V/A

DETAIL: B
SCALE: 2:1

NO.	Symbol
1	GPU
2	RGB
3	GND
4	GND
5	LED-K
6	LED-A2
7	LED-A1
8	GND
9	GND
10	/RESET
11	GND
12	GND
13	DB17
14	DB16
15	DB15
16	DB14
17	DB13
18	DB12
19	DB11
20	DB10
21	DB9
22	DB8
23	DB7
24	DB6
25	DB5
26	DB4
27	DB3
28	DB2
29	DB1
30	SD0
31	Open
32	/RD
33	WR
34	RS
35	CS
36	ENABLE
37	GND
38	VSYNC
39	HSYNC
40	DOTCLK
41	TE
42	VCCO
43	VCC
44	IN0/D
45	IN1
46	IN2
47	IN3
48	IN4
49	IN5
50	IN6
51	IN7
52	IN8
53	IN9
54	IN10
55	IN11
56	IN12
57	IN13
58	IN14
59	IN15
60	IN16
61	IN17
62	IN18
63	IN19
64	IN20
65	IN21
66	IN22
67	IN23
68	IN24
69	IN25
70	IN26
71	IN27
72	IN28
73	IN29
74	IN30
75	IN31
76	IN32
77	IN33
78	IN34
79	IN35
80	IN36
81	IN37
82	IN38
83	IN39
84	IN40
85	IN41
86	IN42
87	IN43
88	IN44
89	IN45
90	IN46
91	IN47
92	IN48
93	IN49
94	IN50
95	IN51
96	IN52
97	IN53
98	IN54
99	IN55
100	IN56
101	IN57
102	IN58
103	IN59
104	IN60
105	IN61
106	IN62
107	IN63
108	IN64
109	IN65
110	IN66
111	IN67
112	IN68
113	IN69
114	IN70
115	IN71
116	IN72
117	IN73
118	IN74
119	IN75
120	IN76
121	IN77
122	IN78
123	IN79
124	IN80
125	IN81
126	IN82
127	IN83
128	IN84
129	IN85
130	IN86
131	IN87
132	IN88
133	IN89
134	IN90
135	IN91
136	IN92
137	IN93
138	IN94
139	IN95
140	IN96
141	IN97
142	IN98
143	IN99
144	IN100
145	IN101
146	IN102
147	IN103
148	IN104
149	IN105
150	IN106
151	IN107
152	IN108
153	IN109
154	IN110
155	IN111
156	IN112
157	IN113
158	IN114
159	IN115
160	IN116
161	IN117
162	IN118
163	IN119
164	IN120
165	IN121
166	IN122
167	IN123
168	IN124
169	IN125
170	IN126
171	IN127
172	IN128
173	IN129
174	IN130
175	IN131
176	IN132
177	IN133
178	IN134
179	IN135
180	IN136
181	IN137
182	IN138
183	IN139
184	IN140
185	IN141
186	IN142
187	IN143
188	IN144
189	IN145
190	IN146
191	IN147
192	IN148
193	IN149
194	IN150
195	IN151
196	IN152
197	IN153
198	IN154
199	IN155
200	IN156
201	IN157
202	IN158
203	IN159
204	IN160
205	IN161
206	IN162
207	IN163
208	IN164
209	IN165
210	IN166
211	IN167
212	IN168
213	IN169
214	IN170
215	IN171
216	IN172
217	IN173
218	IN174
219	IN175
220	IN176
221	IN177
222	IN178
223	IN179
224	IN180
225	IN181
226	IN182
227	IN183
228	IN184
229	IN185
230	IN186
231	IN187
232	IN188
233	IN189
234	IN190
235	IN191
236	IN192
237	IN193
238	IN194
239	IN195
240	IN196
241	IN197
242	IN198
243	IN199
244	IN200
245	IN201
246	IN202
247	IN203
248	IN204
249	IN205
250	IN206
251	IN207
252	IN208
253	IN209
254	IN210
255	IN211
256	IN212
257	IN213
258	IN214
259	IN215
260	IN216
261	IN217
262	IN218
263	IN219
264	IN220
265	IN221
266	IN222
267	IN223
268	IN224
269	IN225
270	IN226
271	IN227
272	IN228
273	IN229
274	IN230
275	IN231
276	IN232
277	IN233
278	IN234
279	IN235
280	IN236
281	IN237
282	IN238
283	IN239
284	IN240
285	IN241
286	IN242
287	IN243
288	IN244
289	IN245
290	IN246
291	IN247
292	IN248
293	IN249
294	IN250
295	IN251
296	IN252
297	IN253
298	IN254
299	IN255
300	IN256
301	IN257
302	IN258
303	IN259
304	IN260
305	IN261
306	IN262
307	IN263
308	IN264
309	IN265
310	IN266
311	IN267
312	IN268
313	IN269
314	IN270
315	IN271
316	IN272
317	IN273
318	IN274
319	IN275
320	IN276
321	IN277
322	IN278
323	IN279
324	IN280
325	IN281
326	IN282
327	IN283
328	IN284
329	IN285
330	IN286
331	IN287
332	IN288
333	IN289
334	IN290
335	IN291
336	IN292
337	IN293
338	IN294
339	IN295
340	IN296
341	IN297
342	IN298
343	IN299
344	IN300
345	IN301
346	IN302
347	IN303
348	IN304
349	IN305
350	IN306
351	IN307
352	IN308
353	IN309
354	IN310
355	IN311
356	IN312
357	IN313
358	IN314
359	IN315
360	IN316
361	IN317
362	IN318
363	IN319
364	IN320
365	IN321
366	IN322
367	IN323
368	IN324
369	IN325
370	IN326
371	IN327
372	IN328
373	IN329
374	IN330
375	IN331
376	IN332
377	IN333
378	IN334
379	IN335
380	IN336
381	IN337
382	IN338
383	IN339
384	IN340
385	IN341
386	IN342
387	IN343
388	IN344
389	IN345
390	IN346
391	IN347
392	IN348
393	IN349
394	IN350
395	IN351
396	IN352
397	IN353
398	IN354
399	IN355
400	IN356
401	IN357
402	IN358
403	IN359
404	IN360
405	IN361
406	IN362
407	IN363
408	IN364
409	IN365
410	IN366
411	IN367
412	IN368
413	IN369
414	IN370
415	IN371
416	IN372
417	IN373
418	IN374
419	IN375
420	IN376
421	IN377
422	IN378
423	IN379
424	IN380
425	IN381
426	IN382
427	IN383
428	IN384
429	IN385
430	IN386
431	IN387
432	IN388
433	IN389
434	IN390
435	IN391
436	IN392
437	IN393
438	IN394
439	IN395
440	IN396
441	IN397
442	IN398
443	IN399
444	IN400
445	IN401
446	IN402
447	IN403
448	IN404
449	IN405
450	IN406
451	IN407
452	IN408
453	IN409
454	IN410
455	IN411
456	IN412
457	IN413
458	IN414
459	IN415
460	IN416
461	IN417
462	IN418
463	IN419
464	IN420
465	IN421
466	IN422
467	IN423
468	IN424
469	IN425
470	IN426
471	IN427
472	IN428
473	IN429
474	IN430
475	IN431
476	IN432
477	IN433
478	IN434
479	IN435
480	IN436
481	IN437
482	IN438
483	IN439
484	IN440
485	IN441
486	IN442
487	IN443
488	IN444
489	IN445
490	IN446
491	IN447
492	IN448
493	IN449
494	IN450
495	IN451
496	IN452
497	IN453
498	IN454
499	IN455
500	IN456
501	IN457
502	IN458
503	IN459
504	IN460
505	IN461
506	IN462
507	IN463
508	IN464
509	IN465
510	IN466
511	IN467
512	IN468
513	IN469
514	IN470
515	IN471
516	IN472
517	IN473
518	IN474
519	IN475
520	IN476
521	IN477
522	IN478
523	IN479
524	IN480
525	IN481
526	IN482
527	IN483
528	IN484
529	IN485
530	IN486
531	IN487
532	IN488
533	IN489
534	IN490
535	IN491
536	IN492
537	IN493
538	IN494
539	IN495
540	IN496
541	IN497
542	

- ABSOLUTE MAXIMUM RATINGS

Parameter	Symbol	Min.	Max.	Unit	Note
Supply Voltage	VDD/VCCIO	- 0.3	4.6	V	
Input Signal Voltage	D[17: 0], CS, RD, WR, RS/SCL, SDI, VSYNC, HSYNC, DOTCLK, ENABLE, BS[2:0]	- 0.3	VDD+0.3	V	
Operating Temperature	T _{OPR}	- 20	70	°C	
Storage temperature	T _{ST}	- 30	80	°C	

- ELECTRICAL CHARACTERISTICS

Item	Symbol	Test Condition	Min.	Typ.	Max.	Unit	Remark
Supply Voltage	VDD - VSS	Ta = 25 °C	2.5	2.8	3.3	V	
Logic supply Voltage	IOVCC		1.65	2.8	3.3	V	
Input Voltage	“H” Level	Ta = 25 °C V _{DD} =3V	0.8*IOVCC	-	IOVCC	V	
	“L” Level		V _{SS}	-	0.2*IOVCC	V	
Output Voltage	“H” Level		0.7*IOVCC	-	IOVCC	V	
	“L” Level		V _{SS}	-	0.3*IOVCC	V	
Current of VDD	I _{DD}		-	TBD	-	mA	Note 1

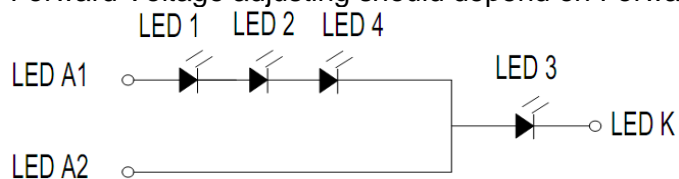
Note 1: To test the current dissipation, use “all Black Pattern” testing pattern.

- BACKLIGHT CHARACTERISTICS

Item	Symbol	Min.	Typ.	Max.	Unit	Condition
Forward Current	I _F	---	20	--	mA	Note 1
Forward Current Voltage	V _F	---	12.8	---	V	Note 2
Backlight Power Consumption	WBL	---	256	--	mW	Note 1
LED Lifetime	---	10000	20000	---	Hrs	Note 3

Note 1: The LED driving condition is defined for total backlight consumption.

Note 2: Forward Voltage adjusting should depend on Forward Current setting.



Note 3: Optical performance should be evaluated at Ta=25°C only.

If the LEDs are driven by high current, high ambient temperature & humidity condition, the lifetime of the LEDs will be reduced. Operating life means brightness reduces to 50% of initial brightness. Typical operating lifetime is estimated data.

- ELECTRO-OPTICAL CHARACTERISTICS

Item	Symbol	Condition	Min.	Typ.	Max.	Unit	Refer	Note
Response Time	T _{ON}	25°C	---	15	30	ms	Fig 1	4
	T _{OFF}		---	20	30			
Contrast ratio	Cr	°	80	100	---	---	Fig 2	1
Uniformity	U	---	70	80	---	%	Fig 2	3
NTSC	---	Backlight is on	---	30	---	%		
Surface Luminance	Lv		110	130	---	cd/m ²	Fig 2	2
Viewing angle ratio		∅=90°	---	55	60	deg	Fig 3	6
		∅=270°	---	40	45			
		∅=180°	---	45	50			
		∅=0°	---	40	45			
CIE (x,y) chromaticity	White	x	---	0.30	---	---	Fig 2.	5
		y	---	0.33	---			
Reflectance				6.85		%	Fig 4	

Note1. Contrast ratio (CR) is defined mathematically in Figure 2.

$$\text{Contrast Ratio} = \frac{\text{Average Surface Luminance with all white pixels (P1, P2, P3, P4, P5)}}{\text{Average Surface Luminance with all black pixels (P1, P2, P3, P4, P5)}}$$

Note 2. Surface luminance is the LCD surface from the surface with all pixels displaying white. For more information see figure 2.

$$L_v = \text{Average Surface Luminance with all white pixels (P1, P2, P3, P4, P5...)}$$

Note 3. Uniformity of surface luminance, White, is defined mathematically in figure 2.

$$\text{White} = \frac{\text{Minimum Surface Luminance with all white pixels (P1, P2, P3, P4, P5)}}{\text{Maximum Surface Luminance with all white pixels (P1, P2, P3, P4, P5)}}$$

Note 4. Response time is the time required for the display to transition from white to black (rise time Tr) and from black to white (decay or fall time, Tf). The industry standard test equipment used is the Autronic-Melcher's Conoscope.

Note 5. Without backlight, CIE (x,y) chromaticity. The x,y value is determined by measuring luminance at each test position 1 through 5, then calculating the average value.

Note 6. The Viewing angle is the angle at which the contrast ratio is greater than 2. For a TFT module, the contrast ratio is greater than 10. The angles are determined for the horizontal or 'x' axis and the vertical or 'y' axis with respect to the 'z' axis, being the LCD surface reference. Also see figure 3.

Note 7. For viewing angle and response time testing, the testing data is based on Autronic-Melcher's BM-7A. For the contrast ratio, surface luminance, luminance uniformity and chromaticity (CIE), the test data is based on the industry's standard SR-3A photo detector.

Note 8. For TFT modules, grey scale reversing occurs in the opposite direction of the panel viewing angle.

Figure 1. Definition of response time

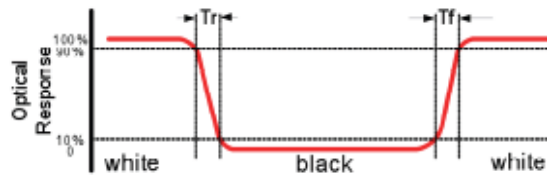


Figure 2. Measuring contrast ratio, surface luminance, luminance uniformity and CIE (chromaticity.)

A: 5mm. B: 5mm. H, V: Active area. Light spot size $\theta=7\text{mm}$, 500mm distance from the LCD surface to the detector lens.

Measurement instrument is Topcon's luminance meter BM-7.

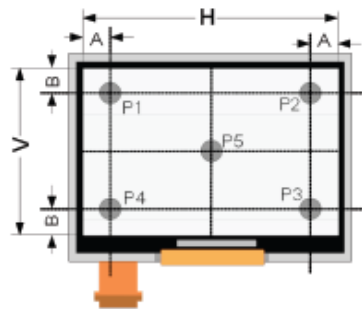


Figure 3. Definition of viewing angle

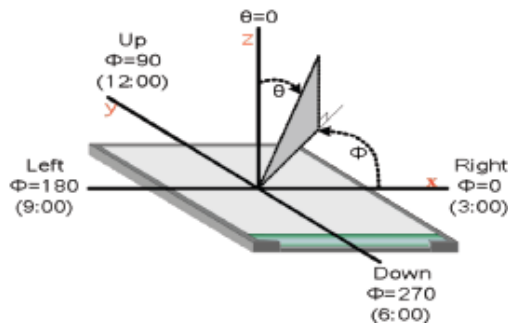
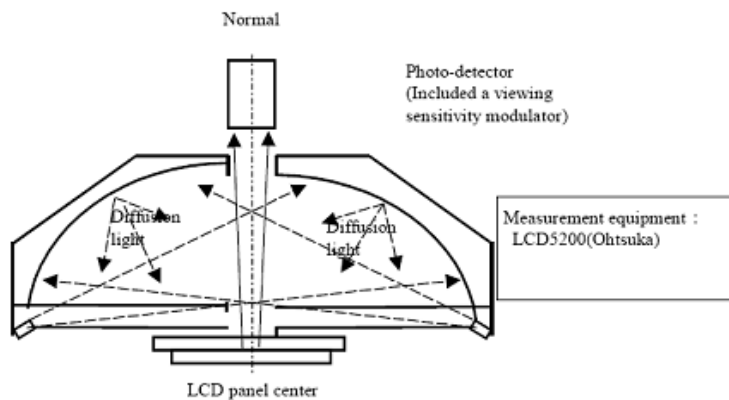


Figure 4. Definition of Reflectance measurement system



- INTERFACE DESCRIPTION

Recommended connector: FH19SC-45S-0.5SH (05) HIROSE

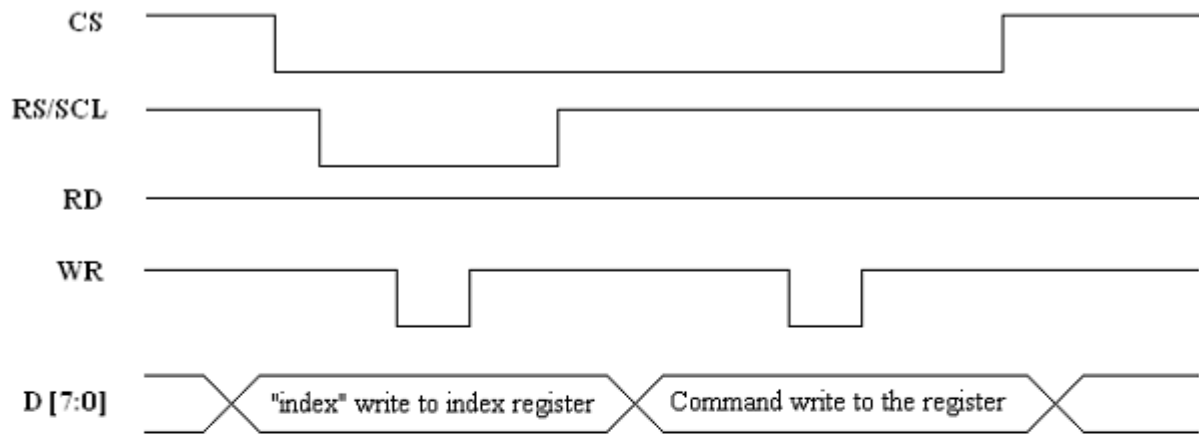
Pin	Symbol (CPU)	Symbol (RGB)	I/O	Description	Note
1	GND	GND	P	Ground	
2	LED-K	LED-K	P	Power supply for LED(Low voltage)	
3	LED-A2	LED-A2	P	Power supply for LED(High voltage2)	
4	LED-A1	LED-A1	P	Power supply for LED(High voltage1)	
5	GND	GND	P	Ground	
6	GND	GND	P	Ground	
7	/RESET	RESET	I	RESET serial(Low active)	
8	GND	GND	P	Ground	
9	DB17	R5	I/O	CPU:Data bus serial(MSB) RGB:RED data signal(MSB)	
10	DB16	R4	I/O	CPU:Data bus serial RGB:RED data signal	
11	DB15	R3	I/O	CPU:Data bus serial RGB:RED data signal	
12	DB14	R2	I/O	CPU:Data bus serial RGB:RED data signal	
13	DB13	R1	I/O	CPU:Data bus serial RGB:RED data signal	
14	DB12	R0	I/O	CPU:Data bus serial RGB:RED data signal(LSB)	
15	DB11	G5	I/O	CPU:Data bus serial RGB:GREEN data signal(MSB)	
16	DB10	G4	I/O	CPU:Data bus serial RGB:GREEN data signal	
17	DB9	G3	I/O	CPU:Data bus serial RGB:GREEN data signal	
18	DB8	G2	I/O	CPU:Data bus serial RGB:GREEN data signal	
19	DB7	G1	I/O	CPU:Data bus serial RGB:GREEN data signal	
20	DB6	G0	I/O	CPU:Data bus serial RGB:GREEN data signal(LSB)	
21	DB5	B5	I/O	CPU:Data bus serial RGB:BLUE data signal(MSB)	
22	DB4	B4	I/O	CPU:Data bus serial RGB:BLUE data signal	
23	DB3	B3	I/O	CPU:Data bus serial RGB:BLUE data signal	
24	DB2	B2	I/O	CPU:Data bus serial RGB:BLUE data signal	
25	DB1	B1	I/O	CPU:Data bus serial RGB:BLUE data signal	

26	DB0	B0	I/O	CPU:Data bus serial RGB:BLUE data signal(LSB)
27	GND	SDI	I	CPU: Ground RGB: Serial data input pin
28	OPEN	SDO	O	CPU: not use. leave open or to GND/VCCIO RGB: Serial data output pin
29	/RD	NC	I	CPU: read signal and read data. RGB: NO connect
30	/WR	NC	I	CPU: write signal and write data. RGB: NO connect
31	RS	SCL	I	CPU: Data / Command Selection pin. RGB: Serial Clock signal
32	/CS	CS	I	Chip select signal.
33	GND	ENABLE	I	CPU: Ground RGB: A data ENABLE signal
34	GND	VSYNC	I	CPU: Ground RGB: Frame synchronizing signal
35	GND	HSYNC	I	CPU: Ground RGB: Frame synchronizing signal
36	GND	DOTCLK	I	CPU: Ground RGB: Pixel clock signal
37	TE	TE	O	CPU: Tearing effect output. RGB: Not used, please open this pin.
38	VCCIO	VCCIO	P	I/O Pad and Digital power supply
39	VCC	VCC	P	Analog power supply
40	M0/1D	IM0/1D	I	System interface select.
41	IM1	IM1	I	System interface select.
42	IM2	IM2	I	System interface select.
43	GND	GND	P	Ground
44	GND	GND	P	Ground
45	GND	GND	P	Ground

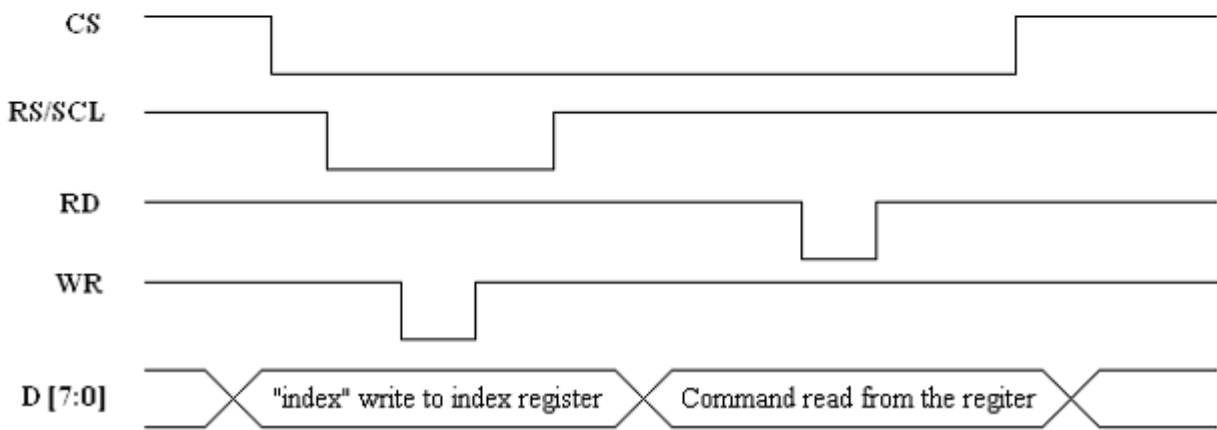
Note: I/O definition: I-----Input ;O---Output ;P----Power

- TIMING CHART and DATA

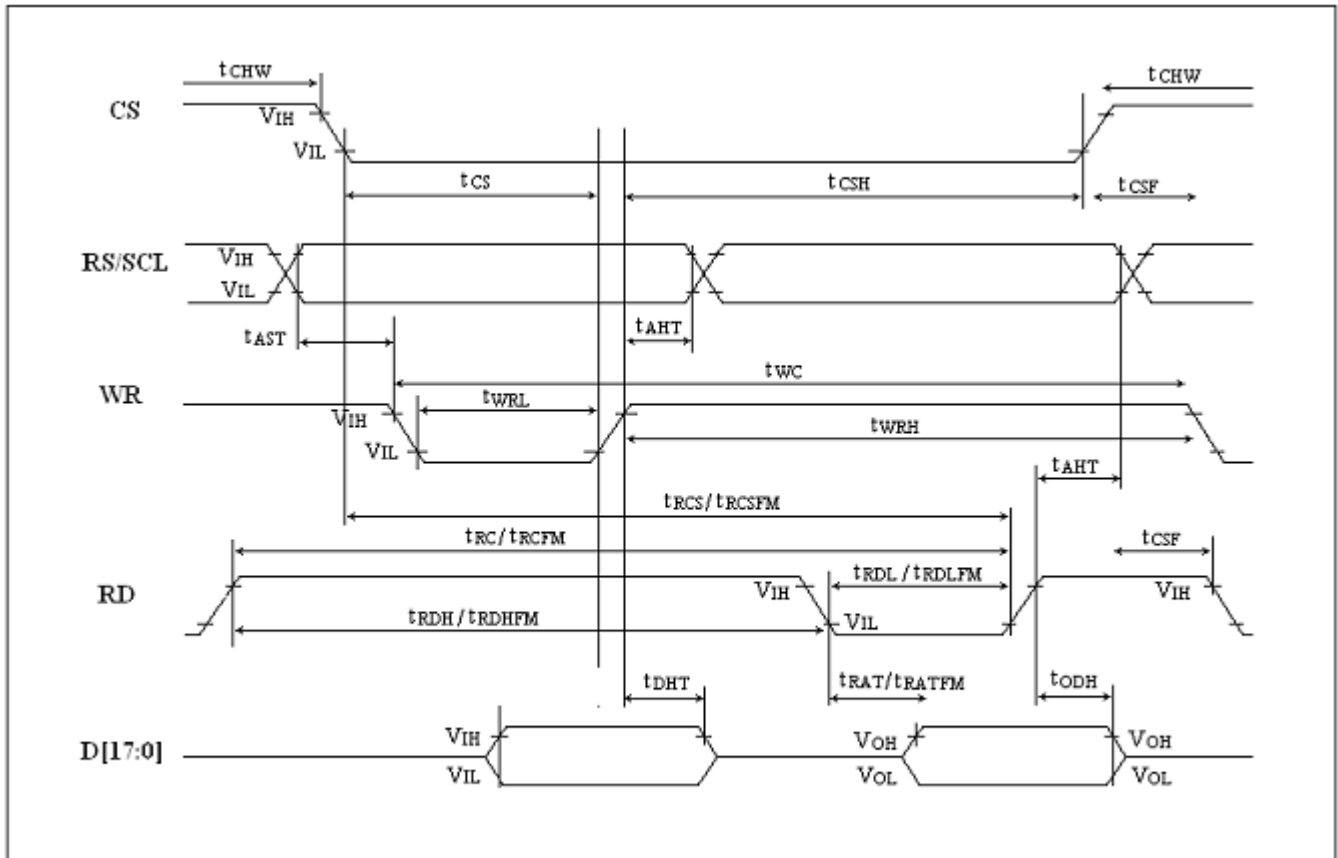
- CPU Interface mode Timing and Characteristics



System Bus Interface Write Register Timing



System Bus Interface Read Register Timing



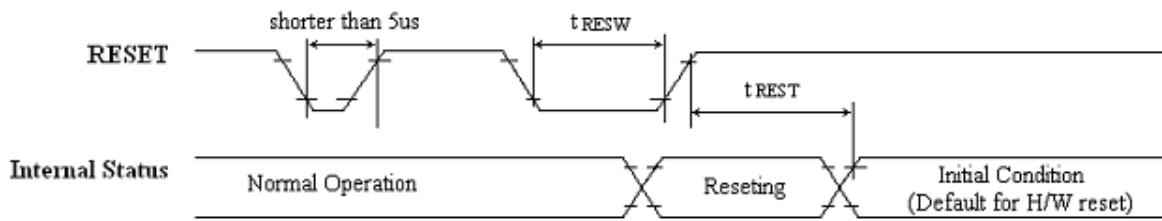
CPU Interface Characteristics

Normal Write Mode (IOVCC=1.65~3.3V, VCC=2.3~3.3V)

Signal	Symbol	Parameter	Spec.			Description
			Min.	Max.	Unit	
RS/SCL	t_{AST}	Address setup time	10	-	ns	-
	t_{AHT}	Address hold time(Write/Read)	10	-	ns	-
CS	t_{CHW}	Chip select "H" pulse width	0	-	-	-
	t_{CS}	Chip select setup time (Write)	35	-	-	-
	t_{RCS}	Chip select setup time (Read ID)	100	-	ns	-
	t_{RCSFM}	Chip select setup time (Read FM)	100	-	ns	-
	t_{CSF}	Chip select wait time(Write/Read)	10	-	-	-
	t_{CSH}	Chip select hold time	10	-	-	-
WR	t_{WC}	Write cycle	100	-	ns	-
	t_{WRH}	Control pulse "H" duration	20	-	ns	-
	t_{WRL}	Control pulse "L" duration	20	-	ns	-
RD	t_{RC}	Read cycle (ID)	150	-	ns	When read ID data
	t_{RDH}	Control pulse "H" duration (ID)	40	-	ns	When read ID data
	t_{RDL}	Control pulse "L" duration (ID)	50	-	ns	When read ID data
RD	t_{RCFM}	Read cycle (FM)	250	-	ns	When read from frame memory
	t_{RDHFM}	Control pulse "H" duration (FM)	50	-	ns	When read from frame memory
	t_{RDLFM}	Control pulse "L" duration (FM)	150	-	ns	When read from frame memory
D[17:0]	t_{DST}	Data setup time	20	-	ns	For maximum
	t_{DHT}	Data hold time	20	-	ns	$C_L=30pF$
	t_{RAT}	Read access time (ID)	-	70	ns	For minimum
	t_{RATFM}	Read access time (FM)	-	100	ns	$C_L=8pF$
	t_{ODH}	Output disable time	20	80	ns	$C_L=8pF$

CPU Interface Timing Parameters

- Reset Timing



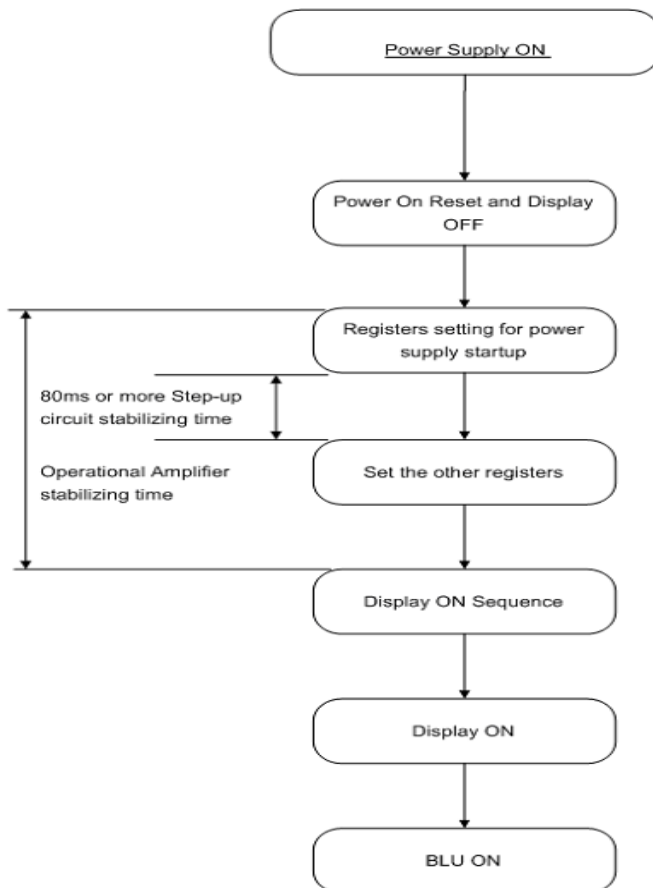
Reset timing

Reset input timing

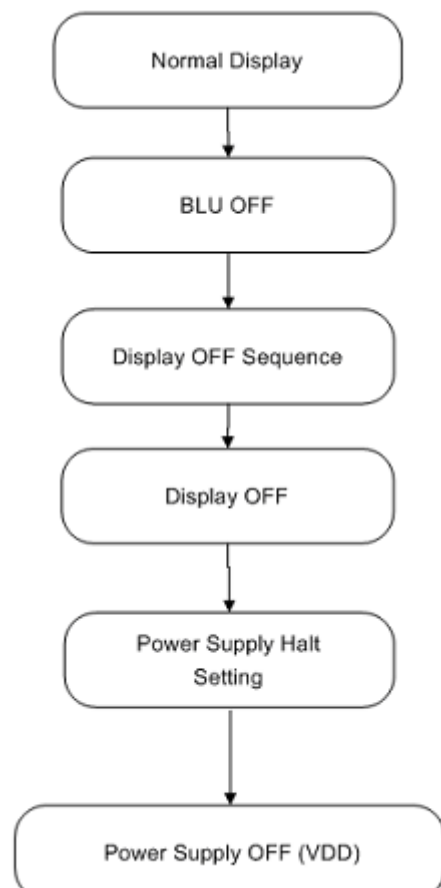
Symbol	Parameter	Related Pins	Spec.			Note	Unit
			Min.	Typ.	Max.		
t _{RESW}	Reset low pulse width	RESET	10	-	-	-	us
t _{REST}	Reset complete time	-	-	-	5	When reset applied during "Sleep In mode"	ms
		-	-	-	120	When reset applied during "Sleep Out mode"	ms

- Power On/Off Sequence

Power On Sequence



Power Off Sequence



• RELIABILITY TESTING

NO.	Item	Condition	Criteria
1	High Temperature Operating	70°C +/-2°C, 240Hrs	IEC60068-2-1 GB2423.2
2	Low Temperature Operating	-20°C +/-2°C, 240Hrs	IEC60068-2-1 GB2423.1
3	High Temperature Storage	80°C +/-2°C, 240Hrs	IEC60068-2-1 GB2423.2
4	Low Temperature Storage	-30°C +/-2°C, 240Hrs	IEC60068-2-1 GB2423.2
5	High Temperature & High Humidity Storage	+40°C, 90% RH max,240 hours	IEC60068-2-3, GB/T2423.3
6	Thermal Shock (Non-operation)	-30°C 30 min~+80°C 30 min, Change time:5min, 20 Cycle	Start with cold temperature, End with high temperature, EC60068-2-14,GB2423.22— 87
7	Vibration (non operating)	Frequency range:10~55Hz, Stroke:1.5mm Sweep:10Hz~55Hz~10Hz 1 hours for each direction of X.Y.Z. (3 hours for total)	IEC60068-2-6 GB/T2423.10
8	Drop Test (packaged)	Height:80 cm,1 corner, 3 edges, 6 surfaces	IEC60068-2-32 GB/T2423.8
9	Shock (non-operation)	60G 6ms, ±X,±Y,±Z 3 times for each direction	IEC60068-2-27 GB/T2423.5
10	ESD (operation)	C=150pF, R=330Ω · 5points/panel Air:± 8KV, 5times; Contact:± 4KV, 5 times; (Environment: 15°C~35°C, 30%~60%, 86Kpa~106Kpa)	IEC61000-4-2 GB/T17626.2—1998

Notes:

1. Test samples are applied to one test item.
2. Sample size for each test item is 2-10pcs.
3. For humidity testing, a pure water resistance of >10MW should be used.
4. (a) In the case of a malfunction caused by ESD damage, if the LCM returns to it's normal state after resetting, the item is considered to have passed the ESD test.
(b) It is recommended to use an anti-static blower (ionizer) to reduce the electro-static voltage in the working area.
(c) When removing the protection film from the LCM panel, peel off the film slowly (more than 1sec) while blowing the ioniser towards the peeling area to minimize ESD. This will reduce the risk of damaging the electrical circuitry.
5. If it is installed, please use the automatic test mode on the LCM &/or demonstration box when testing.

• INSPECTION CRITERIA

This specification is designed to be used as the standard acceptance/rejection criteria for normal LCM products.

1. Sampling plan.

The sampling plan according to GB/T 2828.1-2003 / ISO2859-16 1999 and ANSI/ASQC Z1.4 1993, normal level 2 and based on:

- Major defect: AQL 0.65
- Minor defect: AQL 1.5

2. Inspection condition

- The viewing distance for cosmetic inspection is approximately 30cm with the naked eye, and under an environment of 20-40W light intensity, in all directions, within 45° against a perpendicular line. (Normal temperature 20-25°C and normal humidity 60+/-15 RH.)
- Driving voltage - The Vop value from which the most optimal contrast can be obtained near the specified Vop in the specification (within +/-0.5V of the typical value at 25°C.)

3. Definition of inspection zone in LCD.

Zone A: active area

Zone B: viewing area except Zone A (Zone A + Zone B = Minimum viewing area)

Zone C: outside viewing area (invisible area after assembling customer's product.

Figure 4

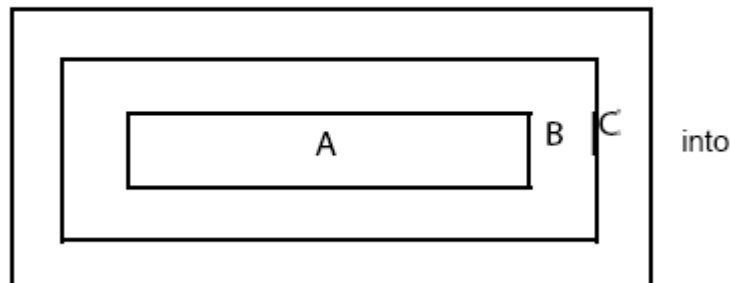


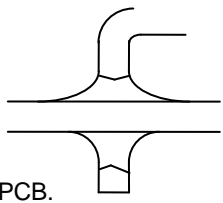
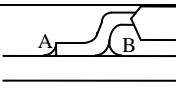
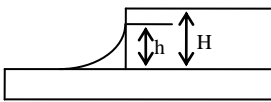
Figure 4 inspection zones in an LCD

Note: As a general rule visual defects in Zone C are permissible when there is no visual effect once assembled into the customer's product.

• INSPECTION STANDARD

No.	Item	Judgment Criteria	Partition
1	All functional defects	1) No display 2) Display abnormal 3) Missing vertical or horizontal segment 4) Short circuit 5) Backlight not working, flickering and abnormal light	Major
2	Missing	Missing component	Major
3	Outline dimension	Overall outline dimension beyond the drawing dimension is not allowed	Major

• COSMETIC CRITERIA

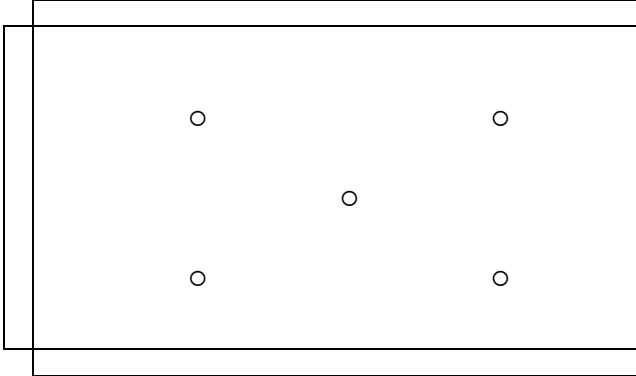
No.	Item	Judgment Criteria	Partition
1	Difference in Spec.	None allowed	Major
2	Pattern peeling	No substrate pattern peeling and floating	Major
3	Soldering defects	No soldering missing No soldering bridge No cold soldering	Major Major Major
4	Resist flaw on substrate	Invisible copper foil ($\varnothing 0.5\text{mm}$ or more) on substrate pattern	Minor
5	Accretion of metallic Foreign matter	No soldering dust No accretion of metallic foreign matters (Not exceed $\varnothing 0.2\text{mm}$)	Minor Minor
6	Stain	No stain to spoil cosmetic badly	Minor
7	Plate discoloring	No plate fading, rusting and discoloring	Minor
8	1. Lead parts	a. Soldering side of PCB Solder to form a 'Filet' all around the lead. Solder should not hide the lead form perfectly. (too much) b. Components side (In case of 'Through Hole PCB') 	Minor
	2. Flat packages	Solder to reach the Components side of PCB. Either 'toe' (A) or 'heel' (B) of the lead to be covered by 'Filet'. Lead form to be assume over solder. 	Minor
	3. Chips	$(3/2) H \geq h \geq (1/2) H$ 	Minor
9	Solder ball/solder splash	a) The spacing between solder ball and the conductor or solder pad $h \geq 0.13\text{mm}$. The diameter of the solder ball $d \leq 0.15\text{mm}$. b) The quantity of solder balls or solder splashes isn't more than 5 in 600mm^2 . c) Solder balls / splashes do not violate minimum electrical clearance d) Solder balls/splashes must be not be able to be dislodged with normal product usage	Minor Minor Major Minor

• **COSMETIC CRITERIA (non-operating)**

No.	Defect	Judgment Criteria	Classification										
1	Spots	In accordance with Screen Cosmetic Criteria (Operating) No.1.	Minor										
2	Lines	In accordance with Screen Cosmetic Criteria (Operating) No.2.	Minor										
3	Bubbles in polarizer	<table border="1"> <thead> <tr> <th>Size : d mm</th> <th>Acceptable Qty in active area</th> </tr> </thead> <tbody> <tr> <td>d ≤ 0.3</td> <td>Disregard</td> </tr> <tr> <td>0.3 < d ≤ 1.0</td> <td>3</td> </tr> <tr> <td>1.0 < d ≤ 1.5</td> <td>1</td> </tr> <tr> <td>1.5 < d</td> <td>0</td> </tr> </tbody> </table>	Size : d mm	Acceptable Qty in active area	d ≤ 0.3	Disregard	0.3 < d ≤ 1.0	3	1.0 < d ≤ 1.5	1	1.5 < d	0	Minor
Size : d mm	Acceptable Qty in active area												
d ≤ 0.3	Disregard												
0.3 < d ≤ 1.0	3												
1.0 < d ≤ 1.5	1												
1.5 < d	0												
4	Scratch	In accordance with spots and lines operating cosmetic criteria. When the light reflects on the panel surface, the scratches are not to be remarkable.	Minor										
5	Allowable density	Above defects should be separated more than 30mm each other.	Minor										
6	Coloration	Not to be noticeable coloration in the viewing area of the LCD panels. Back-lit type should be judged with back-lit on state only.	Minor										
7	Contamination	Not to be noticeable.	Minor										

• **COSMETIC CRITERIA (operating)**

No.	Defect	Judgment Criteria	Classification																				
1	Spots	<p>A) Clear</p> <table border="1"> <thead> <tr> <th>Size : d mm</th> <th>Acceptable Qty in active area</th> </tr> </thead> <tbody> <tr> <td>d ≤ 0.1</td> <td>Disregard</td> </tr> <tr> <td>0.1 < d ≤ 0.2</td> <td>6</td> </tr> <tr> <td>0.2 < d ≤ 0.3</td> <td>2</td> </tr> <tr> <td>0.3 < d</td> <td>0</td> </tr> </tbody> </table> <p>Note : Including pin holes and defective dots which must be within one pixel size.</p> <p>B) Unclear</p> <table border="1"> <thead> <tr> <th>Size : d mm</th> <th>Acceptable Qty in active area</th> </tr> </thead> <tbody> <tr> <td>d ≤ 0.2</td> <td>Disregard</td> </tr> <tr> <td>0.2 < d ≤ 0.5</td> <td>6</td> </tr> <tr> <td>0.5 < d ≤ 0.7</td> <td>2</td> </tr> <tr> <td>0.7 < d</td> <td>0</td> </tr> </tbody> </table>	Size : d mm	Acceptable Qty in active area	d ≤ 0.1	Disregard	0.1 < d ≤ 0.2	6	0.2 < d ≤ 0.3	2	0.3 < d	0	Size : d mm	Acceptable Qty in active area	d ≤ 0.2	Disregard	0.2 < d ≤ 0.5	6	0.5 < d ≤ 0.7	2	0.7 < d	0	Minor
Size : d mm	Acceptable Qty in active area																						
d ≤ 0.1	Disregard																						
0.1 < d ≤ 0.2	6																						
0.2 < d ≤ 0.3	2																						
0.3 < d	0																						
Size : d mm	Acceptable Qty in active area																						
d ≤ 0.2	Disregard																						
0.2 < d ≤ 0.5	6																						
0.5 < d ≤ 0.7	2																						
0.7 < d	0																						
2	Lines	<p>A) Clear</p> <p>Note : () - Acceptable Qty in active area L - Length (mm) W - Width (mm) ∞ - Disregard</p> <p>B) Unclear</p>	Minor																				
3	Rubbing line	Not to be noticeable.																					
4	Allowable density	Above defects should be separated more than 10mm each other.	Minor																				

5	Rainbow	Not to be noticeable.	Minor
6	Dot size	To be 95% ~ 105% of the dot size (Typ.) in drawing. Partial defects of each dot (ex. pin-hole) should be treated as 'spot'. (see Screen Cosmetic Criteria (Operating) No.1)	Minor
7	Uneven brightness (only back-lit type module)	<p>Uneven brightness must be $B_{MAX} / B_{MIN} \leq 2$</p> <p>- B_{MAX} : Max. value by measure in 5 points - B_{MIN} : Min. value by measure in 5 points</p> <p>Divide active area into 4 vertically and horizontally. Measure 5 points shown in the following figure.</p>  <p>○ : Measuring points</p>	Minor

Note :

- (1) Size : $d = (\text{long length} + \text{short length}) / 2$
- (2) The limit samples for each item have priority.
- (3) Complex defects are defined item by item, but if the number of defects are defined in above table, the total number should not exceed 10.
- (4) In case of 'concentration', even the spots or the lines of 'disregarded' size should not allowed.
Following three situations should be treated as 'concentration'.
 - 7 or over defects in circle of $\varnothing 5\text{mm}$.
 - 10 or over defects in circle of $\varnothing 10\text{mm}$.
 - 20 or over defects in circle of $\varnothing 20\text{mm}$.

- PRECAUTIONS FOR USING LCD MODULES

- HANDLING PRECAUTIONS

(1) The panel is made of glass. Do not subject it to a mechanical shock by dropping it or impact.

(2) If the display panel is damaged and the liquid crystal substance leaks out, be sure not to get any in your mouth. If the substance contacts your skin or clothes, wash it off using soap and water.

(3) Do not apply excessive force to the display surface or the adjoining areas since this may cause the color tone to vary.

(4) The polarizer covering the display surface of the LCD module is soft and easily scratched. Handle this polarizer carefully.

(5) If the display surface becomes contaminated, breathe on the surface and gently wipe it with a soft dry cloth. If it is heavily contaminated, moisten cloth with one of the following solvents :

- Isopropyl alcohol
- Ethyl alcohol

(6) Solvents other than those above-mentioned may damage the polarizer. Especially, do not use the following.

- Water
- Ketone
- Aromatic solvents

(7) Exercise care to minimize corrosion of the electrode. Water droplets, moisture condensation or a current flow in a high-humidity environment, accelerate corrosion of the electrodes.

(8) Install the LCD Module by using the mounting holes. When mounting the LCD module make sure it is free of twisting, warping and distortion. In particular, do not forcibly pull or bend the I/O cable or the backlight cable.

(9) Do not attempt to disassemble or process the LCD module.

(10) NC terminal should be open. Do not connect anything.

(11) If the logic circuit power is off, do not apply the input signals.

(12) To prevent destruction of the elements by static electricity, be careful to maintain an optimum work environment.

- Be sure to ground the body when handling the LCD modules.
- Tools required for assembling, such as soldering irons, must be properly grounded.
- To reduce the amount of static electricity generated, do not conduct assembling and other work under dry conditions.
- The LCD module is coated with a film to protect the display surface. Exercise care when peeling off this protective film since static electricity may be generated.

- STORAGE PRECAUTIONS

When storing the LCD modules, avoid exposure to direct sunlight or to the light of fluorescent lamps. Keep the modules in bags (avoid high temperature / high humidity and low temperatures below the stated storage temperature of the LCM specification).

- OTHER

Liquid crystals solidify under low temperature (below the storage temperature range) leading to defective orientation or the generation of air bubbles (black or white). Air bubbles may also be generated if the module is subject to a low temperature.

If the LCD modules have been operating for a long time showing the same display patterns, the display patterns may remain on the screen as ghost images and a slight contrast irregularity may also appear. A normal operating status can be regained by suspending use for some time. It should be noted that this phenomenon does not adversely affect performance reliability.

To minimize the performance degradation of the LCD modules resulting from destruction caused by static electricity etc., exercise care to avoid holding the following sections when handling the modules.

- Exposed area of the printed circuit board.
- Terminal electrode sections.

- USING LIQUID CRYSTAL DISPLAY MODULES

An LCD is composed of glass and polarizer. Pay attention to the following items when handling.

(1) Please keep the temperature within specified range for use and storage. Polarization degradation, bubble generation or polarizer peel-off may occur with high temperature and high humidity.

(2) Do not touch, push or rub the exposed polarisers with anything harder than an HB pencil lead (glass, tweezers, etc.).

(3) N-hexane is recommended for cleaning the adhesives used to attach front/rear polarisers and reflectors made of organic substances that may be damaged by chemicals such as acetone, toluene, ethanol and isopropyl alcohol.

(4) When the display surface becomes dusty, wipe gently with absorbent cotton or other soft material like chamois soaked in petroleum benzene. Do not scrub hard to avoid damaging the display surface.

(5) Wipe off saliva or water drops immediately, contact with water over a long period of time may cause deformation or color fading.

(6) Avoid contacting oil and fats.

(7) Condensation on the surface and contact with terminals due to cold will damage, stain or dirty the polarisers. After products are tested at low temperature they must be warmed up in a container before coming in contact with room temperature air.

(8) Do not put or attach anything on the display area to avoid leaving marks on.

(9) Do not touch the display with bare hands. This will stain the display area and degrade the insulation between the terminals.

(10) As glass is fragile. It tends to become chipped during handling especially on the edges.

(11) Mounting Method

The panel of the LCD Module consists of two thin glass plates with polarizers, which easily get damaged. Since the Module is fixed by utilizing fitting holes in the printed circuit board.

Extreme care should be taken when handling the LCD Modules.

(12) Caution against static charge

The LCD Module use C-MOS LSI drivers, so we recommend that you connect any unused input terminal to VDD or VSS, do not input any signals before power is turned on. And ground your body, Work/assembly table. And assembly equipment to protect against static electricity.

- PRECAUTIONS FOR SOLDERING

	Manual Soldering	Machine Drag Soldering	Machine Pre-soldering
Non ROHS Product	290°C ~ 350°C Speed : 3 ~ 5 mm/s	330°C ~ 350°C Speed : 4 ~ 8mm/s	300°C ~ 330°C Time : 3 ~ 6S Pressure : 0.8 to 1.2Mpa
RoHS Product	340°C ~ 370°C Time : 3 ~ 5S.	350°C ~ 370°C Time : 4 ~ 8 mm/S.	330°C ~ 360°C Time : 3 ~ 6S. Pressure : 0.8 ~ 1.2Mpa.

(1) If solder flux is used, be sure to remove any remaining flux after finishing the soldering process. (This does not apply in the case of a non-halogen type of flux.) It is recommended that you protect the LCD surface with a cover during the soldering process to prevent any damage due to the flux sparks.

(2) When soldering a backlight panel and PCB, the panel and PCB should not be detached more than 3 times. The temperature determines this number and time conditions as mentioned in the above table, although there may be some variance depending on the actual temperature of the soldering iron.

(3) When removing a backlight panel from the PCB, ensure the solder has completely melted; otherwise the solder pads on the backlight panel and/or PCB may be damaged.

- CAUTIONS FOR OPERATION

(1) It is recommended to drive LCDs within their specified voltage limit since the higher voltage than the upper limit shortens the LCD life. An electrochemical reaction due to direct current causes the LCD to deteriorate. Therefore, avoid the use of direct current drive.

(2) Response time will be extremely delayed at lower temperatures than the operating temperature range. At higher temperatures LCD's will experience a dark color. However those phenomena do not mean a malfunction or the LCD's. Once the LCDs are returned to the specified operating temperature range, the response time and coloration should return to the normal state.

(3) If the display area is physically pressed hard during it's operation, some pixels may be abnormally displayed, but should return to their normal condition after resetting the LCM.

(4) Moisture sitting on the LCM terminals is a cause for an electro-chemical reaction resulting in a terminal open circuit. Usage under the relative condition of 40°C, 50%RH or less is therefore required.

- SAFETY

(1) It is recommended to crush any damaged or unnecessary LCDs into pieces and wash off the liquid crystal by using solvents such as acetone and ethanol, which should then be burned up later.

(2) When any liquid crystal has leaked out of a damaged glass cell and comes in contact with skin, please wash it off well with soap and water.

- WARRANTY

Unless otherwise agreed between Logic Technologies Ltd and the customer, Logic Technologies will replace or repair any of its products that are found to be functionally defective when inspected in accordance with Logic Technologies' acceptance criteria (copies available upon request) for a period of one year from date of shipment. Cosmetic/visual defects must be returned to Logic Technologies within 90 days of shipment. Confirmation of such date shall be based on freight documents. The warranty liability of Logic Technologies is limited to the repair and/or replacement on the terms set forth above. Logic Technologies will not be responsible for any subsequent or consequential losses and/or events.

Returning products under warranty

No warranty can be granted if the precautions stated above have been disregarded. The typical examples of violations are:

- Broken LCD glass.
- PCB eyelet's damaged or modified.
- PCB conductors damaged.
- Circuit modified in any way, including addition of components.
- PCB tampered with by grinding, engraving or painting varnish.
- Soldering to or modifying the bezel in any manner.

Product repairs will be invoiced to the customer upon mutual agreement. Products must be returned with sufficient description of the failures and/or defects. Any connectors or cable installed by the customer must be removed completely without damaging the PCB eyelet's, conductors and terminals.